

TC United B01

Thurston County United

Lacey, WA

B01 total strength=713

attack=1.1 defense=0.5

fall league = PSPL Classic 2 U12, Spr PSPL CI

notes= Ramos 2013

alt names used:

TC United BU12 Ramos

TCU BU12- Ramos

TC United Ramos BU-12

TC United B01-Ramos

THURSTON COUNTY UNITED TC UNITED B01

Venues played:

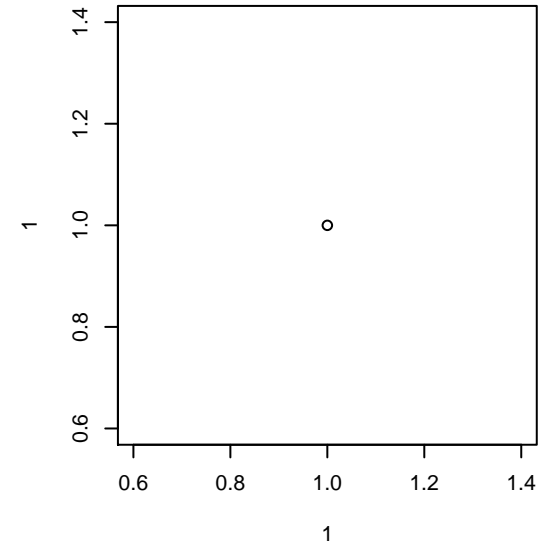
KITG BU12 Green

Crossfire Select Cup BU12 Silver

PSPL Classic 2 U12

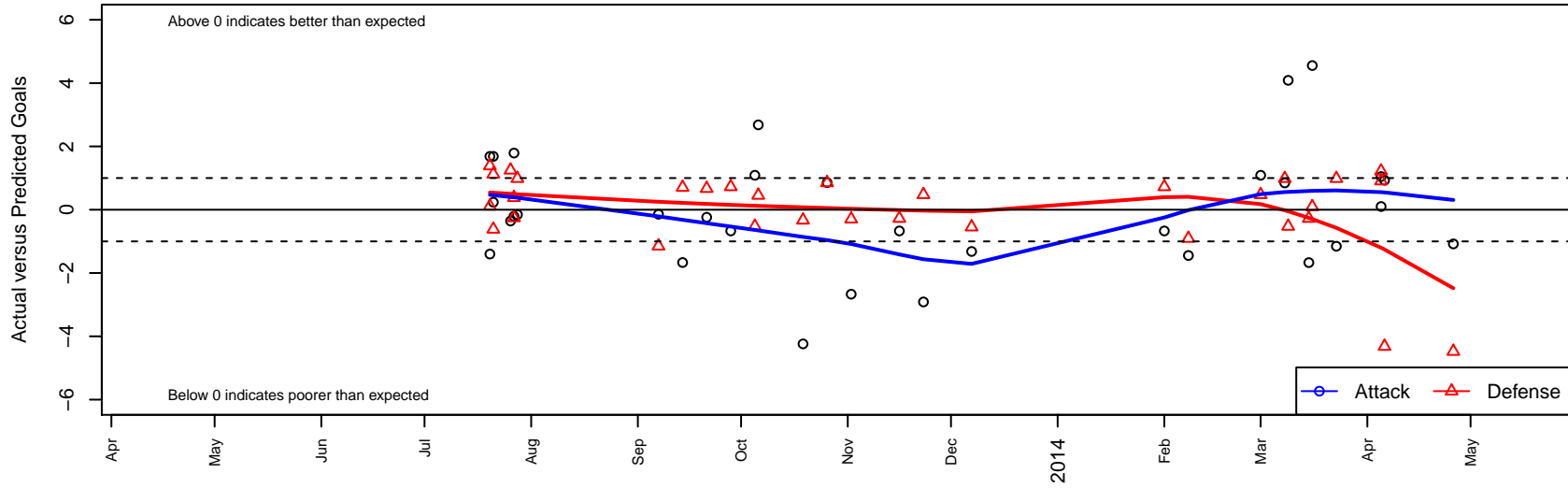
Spr PSPL Classic 2 U12

WA Cup BU12 Gold/Silver U12



TC United B01

Dots are actual minus expected GF (blue circles) and GA (red triangles).
Blue line is smoothed change in attack strength. Red is smoothed change in defense strength.



| | date | home | | away | | venue | pred.home | pred.away |
|-------|------------|----------------------------------|----|----------------------------------|---|----------------------------------|-----------|-----------|
| 26746 | 2014-04-26 | Cobra Aguilitas B01 | 7 | TC United B01 | 0 | WA Cup BU12 Gold/Silver U12 | 2.52 | 1.08 |
| 25870 | 2014-04-06 | TC United B01 | 2 | Seattle Celtic Green B01 | 6 | WA Cup BU12 Gold/Silver U12 | 1.07 | 1.68 |
| 25669 | 2014-04-05 | Tynecastle FC B01 | 3 | TC United B01 | 1 | WA Cup BU12 Gold/Silver U12 | 3.91 | 0.90 |
| 25672 | 2014-04-05 | TC United B01 | 5 | Pumas 02 UNAM B01 | 1 | WA Cup BU12 Gold/Silver U12 | 3.95 | 2.22 |
| 25339 | 2014-03-23 | TC United B01 | 2 | SCORE Eagles Red B01 | 0 | Spr PSPL Classic 2 U12 | 3.15 | 0.98 |
| 24948 | 2014-03-16 | TC United B01 | 7 | Impact FC Black B01 | 1 | Spr PSPL Classic 2 U12 | 2.45 | 1.09 |
| 24619 | 2014-03-15 | FC Crush Classic B01 | 1 | TC United B01 | 2 | Spr PSPL Classic 2 U12 | 0.72 | 3.67 |
| 24263 | 2014-03-09 | Emerald City FC White B01 | 1 | TC United B01 | 9 | Spr PSPL Classic 2 U12 | 0.47 | 4.91 |
| 23958 | 2014-03-08 | SCORE Eagles Red B01 | 0 | TC United B01 | 4 | Spr PSPL Classic 2 U12 | 0.98 | 3.15 |
| 23466 | 2014-03-01 | TC United B01 | 6 | Emerald City FC White B01 | 0 | Spr PSPL Classic 2 U12 | 4.91 | 0.47 |
| 22277 | 2014-02-08 | Impact FC Black B01 | 2 | TC United B01 | 1 | Spr PSPL Classic 2 U12 | 1.09 | 2.45 |
| 21998 | 2014-02-01 | TC United B01 | 3 | FC Crush Classic B01 | 0 | Spr PSPL Classic 2 U12 | 3.67 | 0.72 |
| 20579 | 2013-12-07 | Sparta White B01 | 2 | TC United B01 | 1 | PSPL Classic 2 U12 | 1.45 | 2.32 |
| 19099 | 2013-11-23 | Emerald City FC White B01 | 0 | TC United B01 | 2 | PSPL Classic 2 U12 | 0.47 | 4.91 |
| 18438 | 2013-11-16 | TC United B01 | 3 | FC Crush Classic B01 | 1 | PSPL Classic 2 U12 | 3.67 | 0.72 |
| 16726 | 2013-11-02 | NK Havoc B01 | 1 | TC United B01 | 0 | PSPL Classic 2 U12 | 0.70 | 2.67 |
| 15833 | 2013-10-26 | TC United B01 | 3 | KVJSA Ellensburg FC Chargers B01 | 0 | PSPL Classic 2 U12 | 2.14 | 0.85 |
| 14915 | 2013-10-19 | Cascade FC Green B01 | 1 | TC United B01 | 0 | PSPL Classic 2 U12 | 0.67 | 4.24 |
| 13284 | 2013-10-06 | TC United B01 | 5 | Sparta White B01 | 1 | PSPL Classic 2 U12 | 2.32 | 1.45 |
| 12837 | 2013-10-05 | TC United B01 | 6 | Emerald City FC White B01 | 1 | PSPL Classic 2 U12 | 4.91 | 0.47 |
| 11899 | 2013-09-28 | FC Crush Classic B01 | 0 | TC United B01 | 3 | PSPL Classic 2 U12 | 0.72 | 3.67 |
| 10946 | 2013-09-21 | TC United B01 | 4 | Cascade FC Green B01 | 0 | PSPL Classic 2 U12 | 4.24 | 0.67 |
| 9973 | 2013-09-14 | TC United B01 | 1 | NK Havoc B01 | 0 | PSPL Classic 2 U12 | 2.67 | 0.70 |
| 9034 | 2013-09-07 | KVJSA Ellensburg FC Chargers B01 | 2 | TC United B01 | 2 | PSPL Classic 2 U12 | 0.85 | 2.14 |
| 4970 | 2013-07-28 | TC United B01 | 3 | SCORE Eagles Red B01 | 0 | Crossfire Select Cup BU12 Silver | 3.15 | 0.98 |
| 4664 | 2013-07-27 | TC United B01 | 10 | Fuerza FC Academy B01 | 0 | Crossfire Select Cup BU12 Silver | 10.20 | 0.38 |
| 4671 | 2013-07-27 | TC United B01 | 6 | NWN Blue B01 | 1 | Crossfire Select Cup BU12 Silver | 4.21 | 0.74 |
| 4503 | 2013-07-26 | Crossfire Select Nakamura B01 | 0 | TC United B01 | 2 | Crossfire Select Cup BU12 Silver | 1.25 | 2.36 |

| | date | home | | away | | venue | pred.home | pred.away |
|-------------|-------------|----------------|---|-----------------------|---|-----------------|------------------|------------------|
| <i>4179</i> | 2013-07-21 | Sparta Red B01 | 0 | TC United B01 | 2 | KITG BU12 Green | 1.12 | 1.76 |
| <i>4180</i> | 2013-07-21 | TC United B01 | 4 | America FC B01 | 2 | KITG BU12 Green | 2.31 | 1.38 |
| <i>3711</i> | 2013-07-20 | TC United B01 | 4 | Terminators – Unk B01 | 1 | KITG BU12 Green | 5.40 | 1.11 |
| <i>3712</i> | 2013-07-20 | TC United B01 | 4 | America FC B01 | 0 | KITG BU12 Green | 2.31 | 1.38 |